



flexiprobe™ C540c

Portable video inspection system.

Comprehensive. Convenient. Connected.



The CUES flexiprobe C540c[®]

Welcome to a Connected World

The flexiprobe C540c system simplifies your operations by automatically creating a survey report, allowing you to concentrate on your inspection tasks.

Share your reports quickly and easily via email or the Dropbox file sharing service.*

Use GraniteNet software to integrate the CUES flexiprobe C540c to your asset inspection, decision support, and work management program.

flexiprobe C540c systems – easy to use, efficient to own

- Powerful controller provides a comprehensive and intuitive user interface, simple menus and dedicated function buttons.
- Incorporates report templates using customizable observation codes:
 - Integrate with CUES GraniteNet software† to create NASSCO standard compliant reports including PACP, LACP, and MACP.
- Built-in rechargeable batteries provide up to 7.5 hours usage. Charge on the move for longer use time.
- Ruggedized case and IP55 rating provide reliability and usability most challenging environments.

*WiFi access point required, such as mobile phone, tablet or dongle.

†May require a separate GraniteNet licence from CUES.



Reliability where you need it

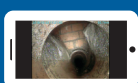
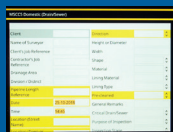


Connectivity aiding productivity

- Create reports
- Wi-Fi connection
- USB
- Email directly to client/ manager or share to DropBox using wireless hotspot connection to phone
- Stream video to local device¹

Notes:

¹ Contact CUES for details and availability



Simpler, Faster, Smarter

The flexiprobe C540c system is managed by the most powerful and intuitive Controller ever designed by CUES. A quick boot-up, an intuitive user interface and a high definition 10.1" TFT display, the C540c lets you concentrate on the job in hand.

Time on site is time well spent

The C540c Controller features a high capacity internal Lithium-Ion battery, providing power for up to a full day's typical usage. Also on board is 128Gb of no-moving-parts memory, sufficient for over 90 hours of video recording.

Reports

A report will be ready to share as soon as your survey is completed, using your unique condition codes. Integration with GraniteNet software will include additional reports for your chosen standard and asset system, including ratings and scores.

On-board WiFi connectivity allows you to use your communications device or dongle as a hotspot, letting you share your survey with your customer, manager or accounts department, creating productive time for you.

Video streaming

Share the flexiprobe C540c display with a compatible device such as your customer's phone or your colleague's tablet.¹



Fast, intuitive inspection



Spend your time surveying, not computing

- Short boot-up time to get you inspecting, not waiting
- Menus in multiple languages
- Context-sensitive buttons on both sides of the display guide you through your survey – no complex menus to remember
- Dedicated buttons for frequently-used tasks, including “Record”, “Make an Observation” and “Count reset”
- Full QWERTY keyboard with IP55 ingress protection (regional layouts also available)

Reporting

Multiple standards: meeting both your and your customers' requirements

- flexiprobe C540c offers a suite of customizable report options.
- Reports are exported as docx documents, which allow editing and customization on a PC.
- GraniteNet software integration provides multiple report templates to choose from.
- Report templates and condition classification codes can be modified to create reports adhering to your own standards.
- On-board connectivity capabilities allow reports to be created and shared within seconds of completing your video inspection survey.
- Exporting to a USB stick, in any of the 3 available ports, is also available.





LEDs for WiFi and battery status

Find the battery charge state without turning C540c on

HD display for clear, sharp picture

USB port and Headphone socket cover

IP55, open and closed

IP68 stainless steel cameras with ultra-bright white LEDs



Compact self-levelling camera option



Convenient cable-tidy hooks

Connectivity: USB, HDMI, WiFi, Analog video out, Audio in and out

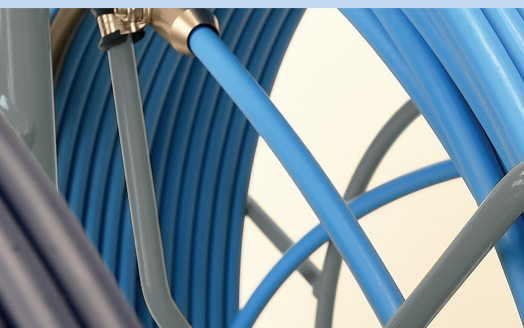


Ultra-flexible Plumbers rod



Each flexiprobe C540c system comes complete with a universal easy-fit brush skid set, that allows the 1" (25mm) camera to be used in pipes up to 4" (100mm) diameter and the 2" (50mm) camera in pipes up to 6" (150mm) diameter. Brushes can be conveniently replaced in seconds. Additional standard equipment may vary due to regional variations.

Options



A range of rods to suit your application

From 100' (30m) for residential and small commercial plumbing use, right up to 500' (150m) for specialist applications.



Ultra-tough high resolution cameras

Stainless steel construction in a compact design. 3 choices: 1" (25mm) for small pipes, and self-levelling 1 1/4" and 2" (32mm and 50mm) for larger diameter applications. High resolution sensors and ultra bright white LEDs ensure a clear picture, even when submerged in water up to 330' (100m) deep.

Inspect pipes from 4"/100mm to 12"/300mm



C543c Reel

C542c
400'/120m Reel

C542 c
200'/60m Reel

C541c Reel

C541c
Plumbers
Reel



Sonde and locator combination

Combine your C540c flexiprobe system with the CUES Accupoint locator to pinpoint your camera's location and depth. A precision locator of 3 different sonde frequencies and 4 active line locating frequencies. Guidance mode helps you trace your target with user-friendly visual and audio guides, while Peak+ mode with Guidance Arrows specifically target the needs of CCTV inspection system users.



flexitrax™ C550c compatible

The C550c flexitrax controller is compatible with the full range of P540c/C540c flexiprobe cameras, reels, sondes and accessories providing unmatched modularity from the small 100' (30m) Plumbers system to the 1000' (305m) motorized P356 steerable crawler system.



flexiprobe C540c systems include as standard:

- flexiprobe C540c controller
- Choice of NTSC/PAL color camera and 512/640Hz flexisonde:
 - 1" (25mm) camera, skid ball, universal brush and skid kit and sonde.
 - 1¼" (32mm) self-levelling camera and skid
 - 2" (50mm) self-levelling camera, skid ball, universal brush and skid kit and 1.4" (35mm) sonde.
- Choice of pushrod reels:
 - 100' (30m) or 200' (60m) C541c Plumbers reel.
 - 115' (35m) C541c reel.
 - 200' (60m) or 400' (120m) P542 reels.
 - 500' (150m) C543c reel.
- Controller swivel mount (Optional for the C541c plumbers reel).
- Mains power supply/charger, IP55 keyboard and CUES tool bag

Summary specifications

C540c Controller		
Power supply	Mains Input	100-240VAC, 50-60Hz, 1.7A
	DC Output	16V, 3.75A, 60W
Input power requirements		10-30V, 60W
Battery capacity	Internal Li-Ion Battery (4S2P)	14.68V, 6.4Ah (93.95Wh)
Battery run-time	Up to 1 day's typical usage, 7.5hrs view only/5hrs continuous recording*	
Battery level indication	5 LEDs in handle (user activated) and on-screen symbol	
Charging Status	2 LEDs	
WiFi Status	1 LED and on-screen symbol	
Display	10.1", 1280x800 transmissive HD color TFT	
Storage	Integral 128Gb and support of USB flash storage	
Recording formats	Video: H.264. Audio: MP3. File format: MP4	
Connectivity	USB 2.0 (x3), HDMI video out, Analog video In (PAL/NTSC), Headphones out, Microphone in, Rod/Camera connectivity and 802.11 b/g/n WiFi	
Environmental Protection	C540c controller	IP55
	Power supply/charger	IP54 rated for indoor use
Temperature	Storage	-4°F to 176°F/-20°C to +80°C
	Operating	14°F to 122°F/-10°C to +50°C
	Charging	32°F to 104°F/0°C to +40°C
Fuse rating	5A	
Dimensions	17.5 x 15.2 x 6.1"/445 x 385 x 155mm	
Weight	16lb/7.25kg	
Construction	High impact ABS and powder-coated, zinc-plated mild steel	

*May vary depending on power management settings chosen, ambient conditions, accessories attached, recording time and other factors

Rods and Reels	C541c Plumbers	C541c Mini	C542c Reels	C543c Reel
Dimensions	22.4" x 16.9" x 10.6" 570 x 430 x 269mm	22.4" x 16.9" x 10.6" 570 x 430 x 269mm	33.5" x 29.5" x 16.5" 850 x 750 x 420mm	32.0" x 46.0" x 18.7" 813 x 1168 x 475mm
Weight	21lbs / 9.4 kg 25lbs / 11.2kg	24lbs / 11kg	40lbs / 18.2 kg 55lbs / 25kg	81.6lbs / 37kg
Construction	Powder-coated tubular steel frame			
Rod	100' / 30m 200' / 60m	115' / 35m	200' / 60m 400' / 120m	500' / 150m

Cameras	1"/25mm camera	1 ¼"/32mm self-levelling camera	2"/50mm self-levelling camera
Dimensions	1" x 1.52"/25.4 x 38.7mm	1.23" x 2.6"/31.24 x 66mm	1.89" x 2.87"/48 x 72.8mm
Weight	0.1lbs/0.06kg	0.4lbs/0.18kg	0.8lbs/0.36kg
Construction	Stainless steel/ polycarbonate	Stainless steel/sapphire glass/polycarbonate	
Power	1.8W	1.3W	3.8W
Environmental	IP68 to 330' (100m)/11bar	IP68 to 230' (70m)/7bar	IP68 to 330' (100m)/11bar
Temperature	Storage: -4°F to 176°F/-20°C to +80°C Operating: 14°F to 122°F/-10°C to +50°C		
Focus	Manually adjustable	Fixed	Manually adjustable
Focal range	10mm to ∞	Fixed	10mm to ∞
Lighting	Ultra bright white LEDs		
LED luminance	≥ 75lm	≥ 150lm	≥ 208lm
Active pixels (HxV)	656 x 492 NTSC 768 x 576 PAL	640 x 480 (NTSC) 640 x 576 (PAL)	768 x 492 NTSC 765 x 582 PAL
Horizontal resolution	≥ 460TVL	≥ 420TVL	≥ 460TVL



Visit www.cuesinc.com

Global locations

CUES (USA)

3600 Rio Vista Avenue, Orlando, FL 32805, USA
Toll Free: +1 (800) 327 7791 salesinfo@cuesinc.com

CUES (Canada)

1675 Sismet Road, Mississauga, Ontario L4W 1P9, Canada
Toll Free: +1 (877) 297 8957 larryc@cuesinc.com

Pearpoint (USA)

39-740 Garand Lane, Unit B, Palm Desert, CA 92211, USA
Toll Free: +1 800 688 8094 Tel: +1 760 343 7350 pearpoint.sales.us@spx.com

As the world's leading manufacturer of water, wastewater, and stormwater inspection equipment, CUES provides the necessary tools for both pipeline inspection and repair. For 50+ years, CUES has manufactured the most rugged and reliable pipeline inspection equipment in the industry.

© 2019 CUES, Inc. All rights reserved. CUES, Inc. is a subsidiary of SPX Corporation. Pearpoint, flexitrac, flexiprobe and RD5100S are trademarks of Radiodetection Ltd., an affiliate of CUES, Inc. WRc, WinCan, HDMI and DropBox are registered trademarks of their respective owners. Due to a policy of continued development, we reserve the right to alter or amend any published specification without notice. This document may not be copied, reproduced, transmitted, modified or used, in whole or in part, without the prior written consent of CUES, Inc.